

Southern Spiral Pipe, Inc.

Double Wall Round

Construction Standards for Double Wall Round Spiral Pipe and Fittings

Galvanized Steel (ASTM A 527), Paintgrip, and Stainless Steel

Outer Shell

Max. Dia.	+2" w.g.		+10" w.g.	
	Pipe Ga.	Fitting Ga.	Pipe Ga.	Fitting Ga.
3"-6"	28	28	28	28
7"-8"	28	28	28	26
9"-10"	28	26	28	26
11"-12"	28	26	26	24
13"-14"	28	26	26	24
15"-16"	26	24	24	22
17"-18"	26	24	24	22
19"-26"	26	24	24	22
27"-36"	24	22	22	20
37"-50"	22	20	20	20
51"-60"	20	18	18	18
61"-84"	18	16	18	16

Inner shell is perforated metal spiral pipe with 3/32" holes on 3/16" staggered centers for a free area of 23%. Inner liner on fittings is solid galvanized as standard but can be perforated.

Insulation is located between the inner and outer shells and is a standard 1" thick with a thermal conductivity of 0.26 Btu-in./hr. sq. ft. deg. F at 75 deg. mean temperature.

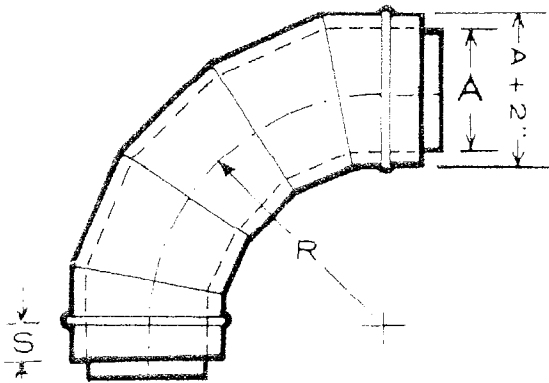
Other thicknesses of insulation are available.

Size designated will be the inside dimension of the pipe.
(Outer dimension of the pipe will be 2" larger standard).

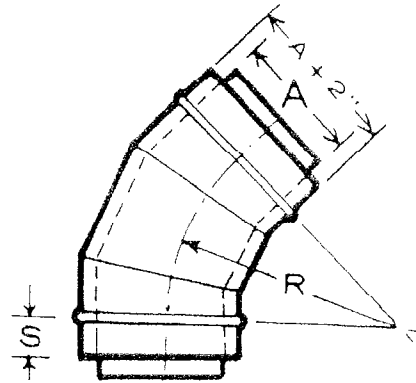
Gauges shown above are per 1995 SMACNA Construction Standards.
Gauges shown are minimum gauges and in some cases may be heavier.

Southern Spiral Pipe, Inc.

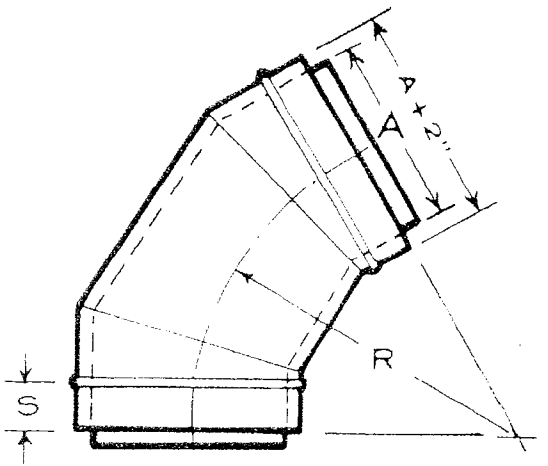
Double Wall Round



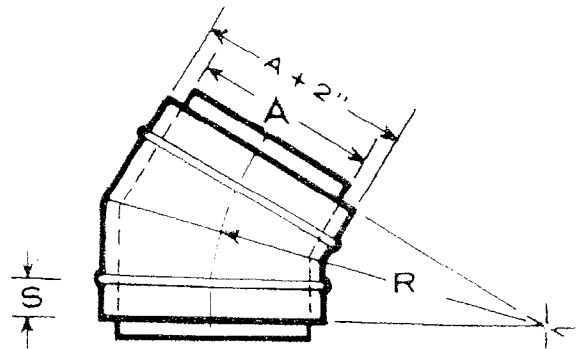
90° 5-PC. ELBOW



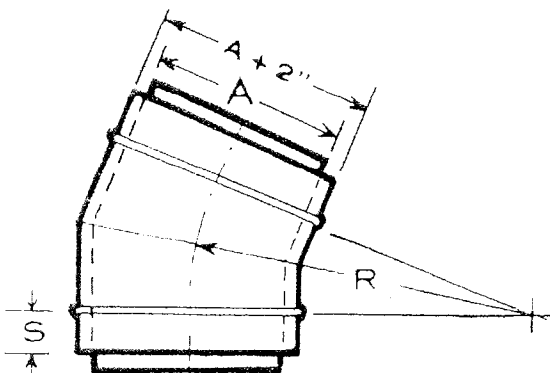
45° 3-PC. ELBOW



60° 3-PC. ELBOW



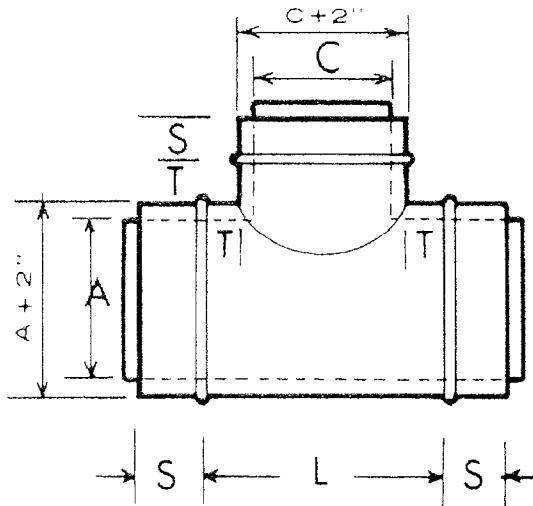
30° 2-PC. ELBOW



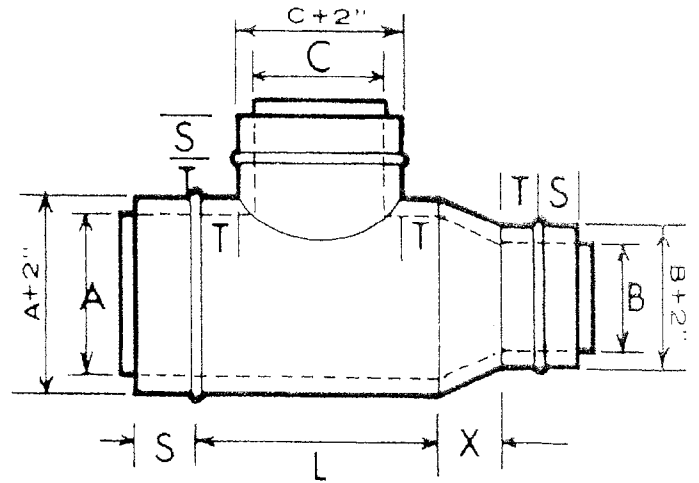
22½° 2-PC. ELBOW

Southern Spiral Pipe, Inc.

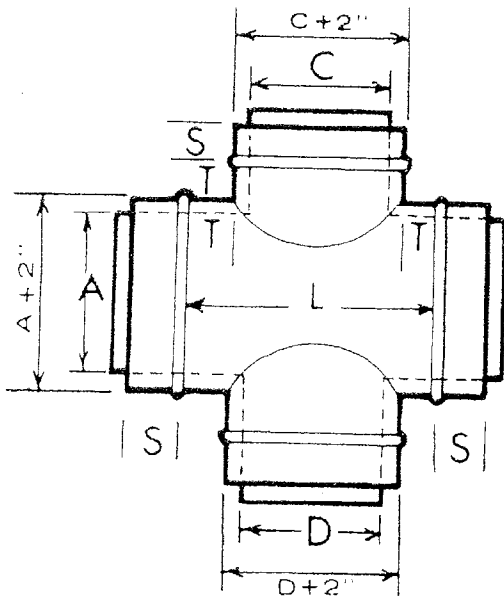
Double Wall Round



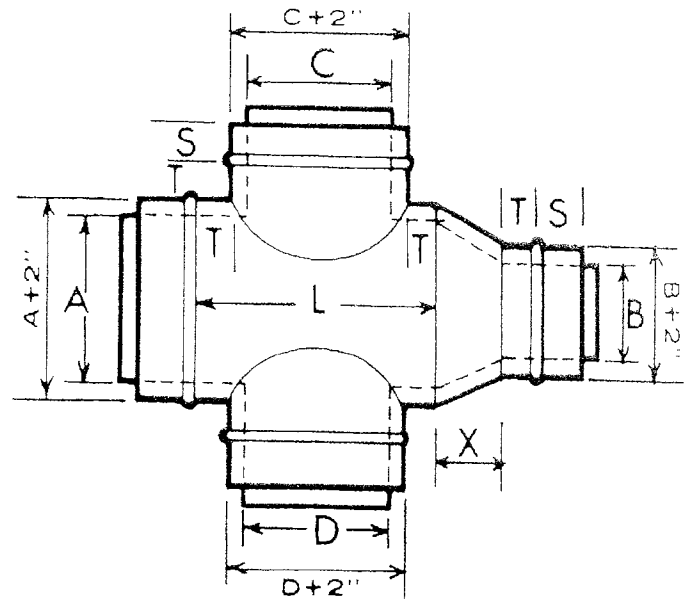
TEE



REDUCING TEE



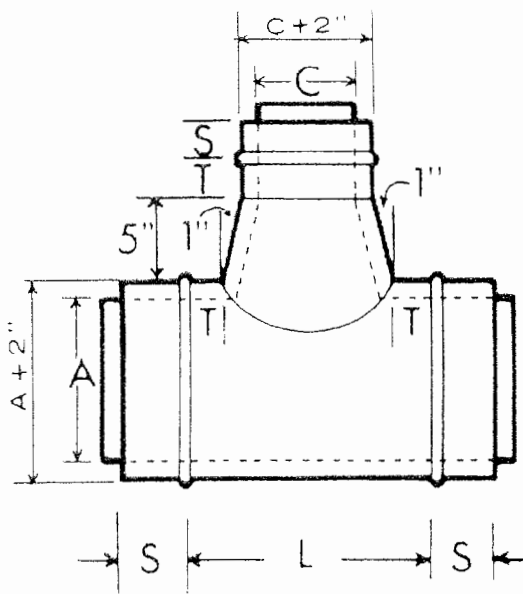
CROSS



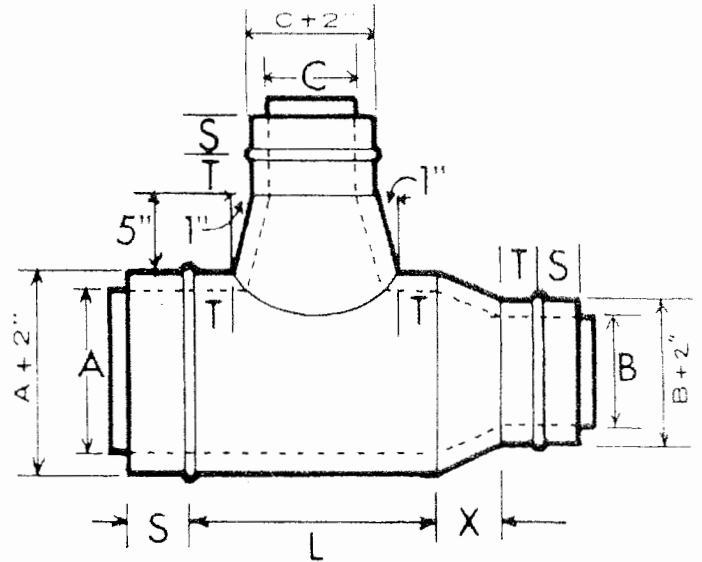
REDUCING CROSS

Southern Spiral Pipe, Inc.

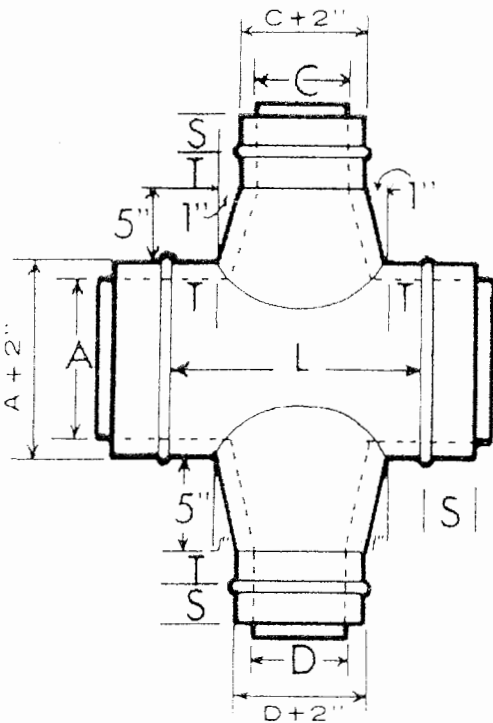
Double Wall Round



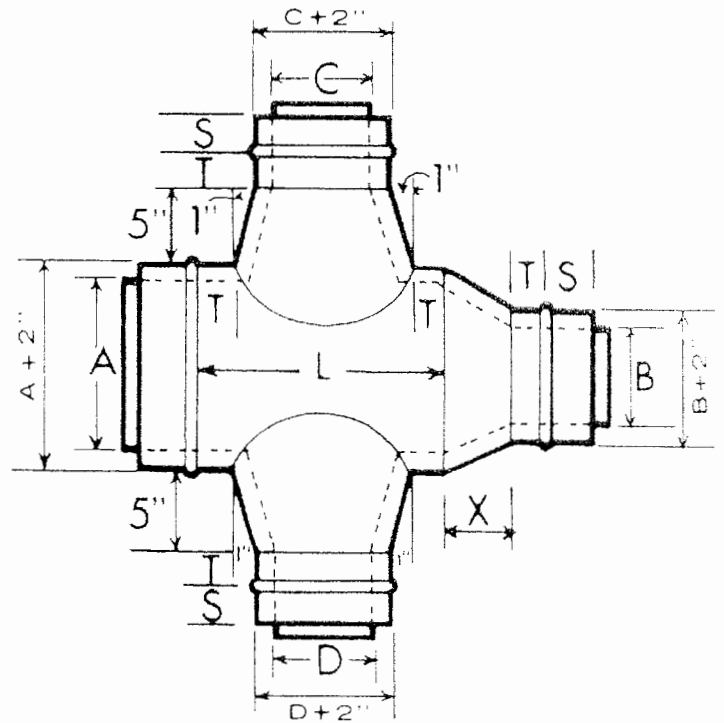
CONICAL TEE



REDUCING CONICAL TEE



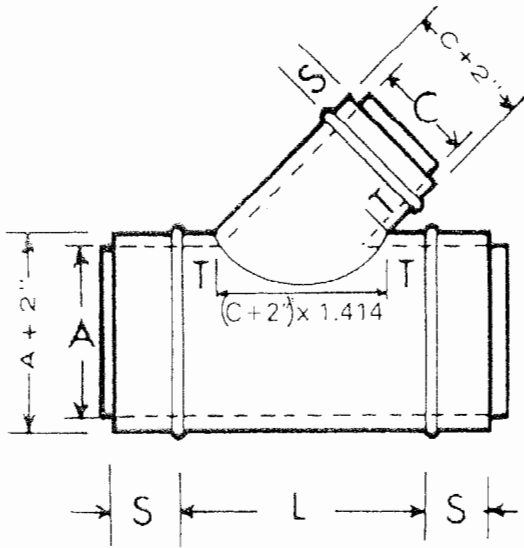
CONICAL CROSS



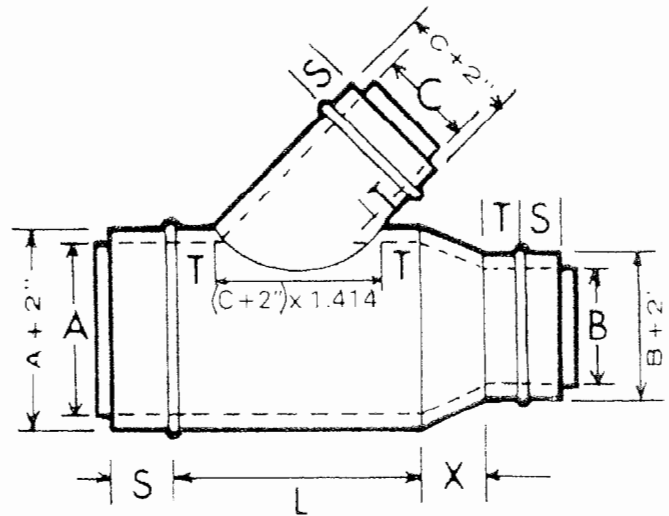
REDUCING CONICAL CROSS

Southern Spiral Pipe, Inc.

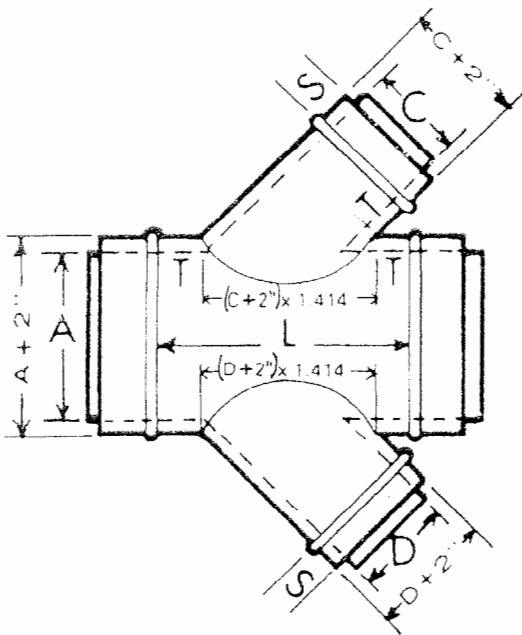
Double Wall Round



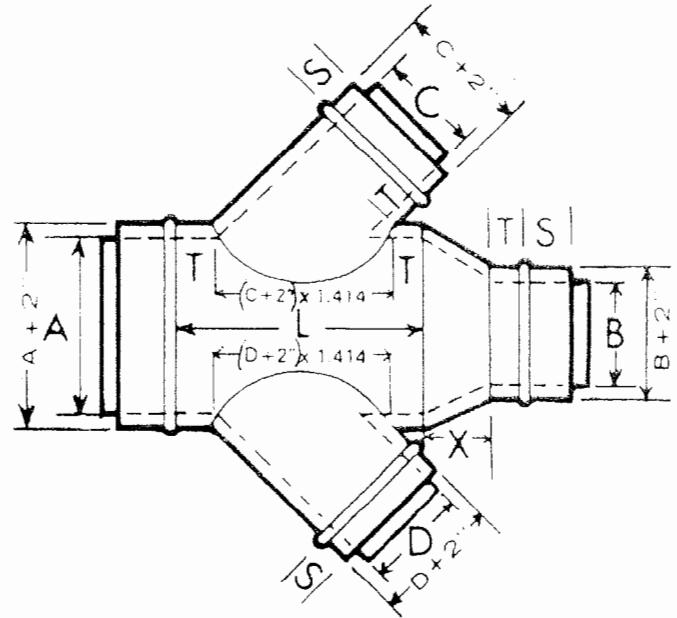
LATERAL



REDUCING LATERAL



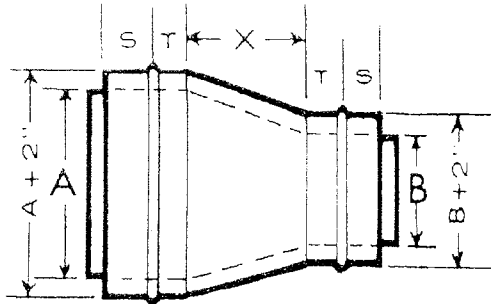
LATERAL CROSS



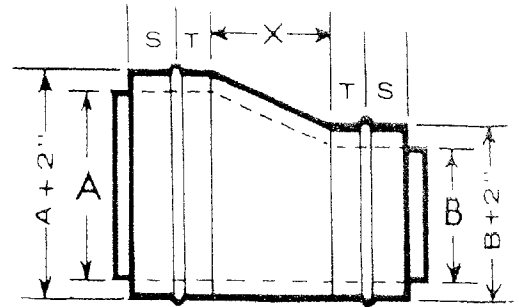
REDUCING LATERAL CROSS

Southern Spiral Pipe, Inc.

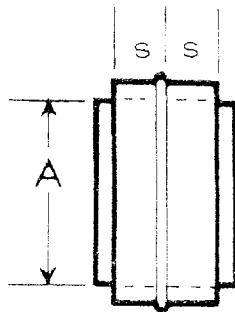
Double Wall Round



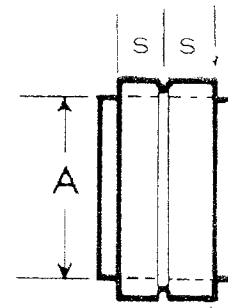
CONCENTRIC REDUCER



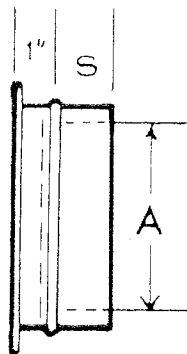
ECCENTRIC REDUCER



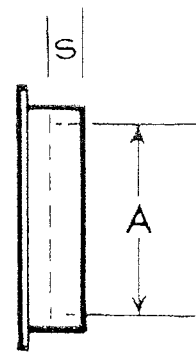
PIPE COUPLINGS



FITTING COUPLINGS



END PLUG



END CAP

Southern Spiral Pipe, Inc.

Double Wall Round

